

PRODUCT INFORMATION PACKET

Model No: 5KC49NN2130Y
Catalog No: C274
1,3600,TEFC,56,1/60/115/230
Totally Enclosed Fan Cooled (TEFC)



Regal and Marathon are trademarks of Regal Beloit Corporation or one of its affiliated companies.
©2018 Regal Beloit Corporation, All Rights Reserved. MC017097E



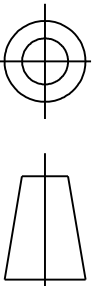
Nameplate Specifications

Output HP	1 Hp	Output KW	0.75 kW
Frequency	60 Hz	Voltage	115/230 V
Current	13.0,6.5 A	Speed	3450 rpm
Service Factor	1.15	Phase	1
Efficiency	68.5 %	Duty	Continuous
Insulation Class	B	Design Code	-
KVA Code	L	Frame	56
Enclosure	Totally Enclosed Fan Cooled	Overload Protector	MAN
Ambient Temperature	40 °C	Drive End Bearing Size	6203
Opp Drive End Bearing Size	6203	UL	Recognized
CSA	Yes	CE	N

Technical Specifications

Electrical Type	Capacitor start(CSIR)	Starting Method	SM
Poles	2	Rotation	Counterclockwise/Clockwise
Mounting	Rigid base	Motor Orientation	Any
Drive End Bearing	BALL	Opp Drive End Bearing	BALL
Frame Material	Rolled Steel	Overall Length	12.43 in
Frame Length	7.15 in	Shaft Diameter	0.630 in
Shaft Extension	1.88 in		
Outline Drawing	52A107631P6	Connection Diagram	52A105383BA

This is an uncontrolled document once printed or downloaded and is subject to change without notice. Date Created: 06/29/2018

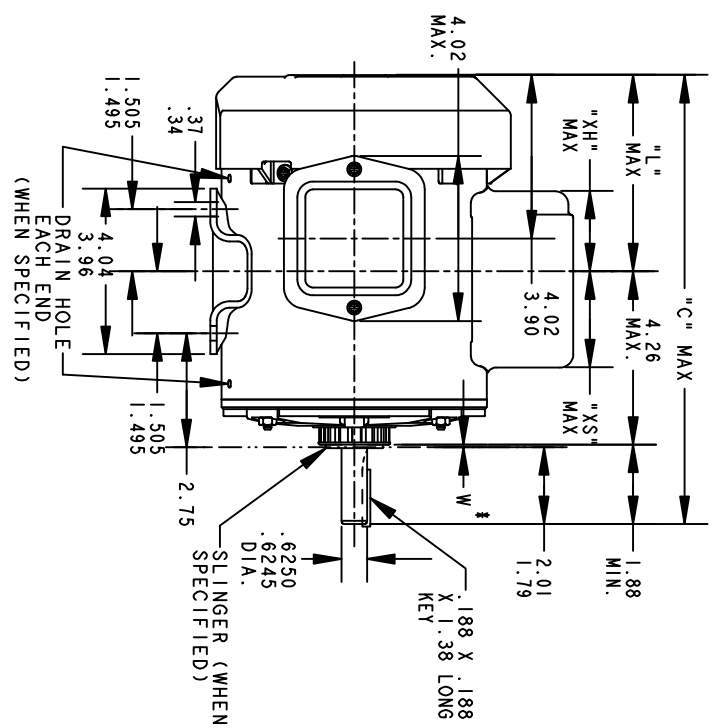
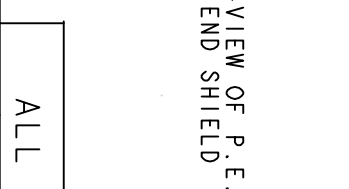
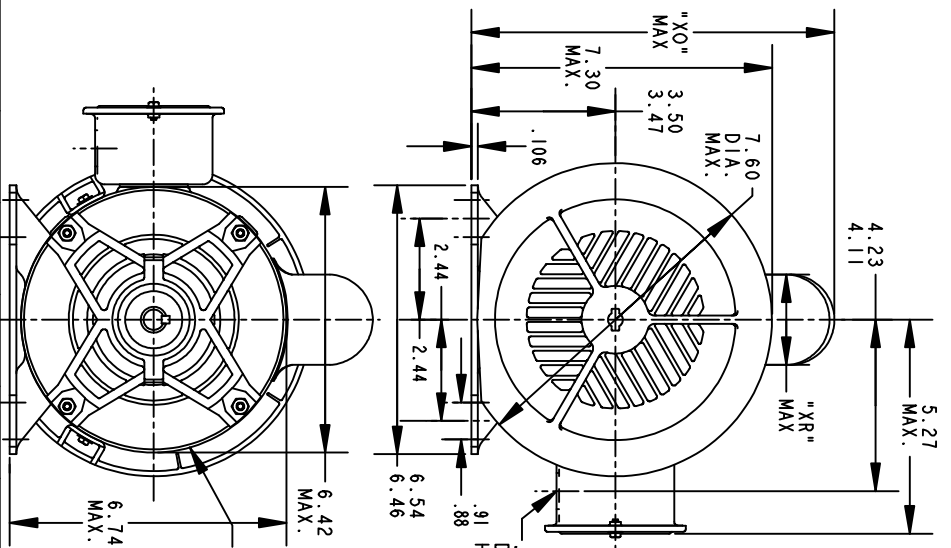


THIRD ANGLE PROJECTION

REVISIONS

REV.	DESCRIPTION	DATE	APPROVED
16	AADED PT# 9 PER DSI0-0516	05/07/10	PRAVEEN.K

REV SHEET
52A107631 15
DRAWING NO. A



ALL DIMENSIONS ARE IN INCHES

*W IS A VARIABLE CLEARANCE DUE TO VARIATIONS IN PARTS AND ASSEMBLY

P	TYPE	GE SIZE	NEMA FR.	"C"	"L"	"XH"	"XO"	"XR"	"XS"	MIN. SHELL
9	KC	49	56	12.96	6.81	3.58	8.24	1.60	2.17	7.68
8	KC	48	56	13.71	6.05	4.33	8.26	2.40	2.92	8.43
7	KC	49	56	11.43	5.28	2.00	8.26	1.60	2.48	6.15
6	KC	49	56	12.43	6.28	3.51	8.22	1.60	2.24	7.15
5	KC	49	56	12.43	6.28	3.51	8.94	2.40	2.24	7.15
4	KC	49	56	12.96	6.81	3.58	8.94	2.40	2.17	7.68
3	KC	46	56	11.83	5.68	2.91	8.94	2.40	2.84	6.55
2	KC	46	56	11.83	5.68	2.91	8.84	2.22	1.63	6.55
1	KC	42	56	11.00	4.85	2.08	8.84	2.22	2.46	5.72



REGAL-BELOIT CORPORATION

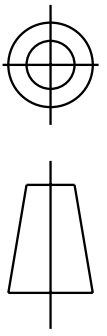
TITLE OUTLINE

GENERAL PURPOSE MOTOR TEFC - BALL BEARING - WELDED BASE FWF - 40 FRAME REDESIGN

SIZE DRAWING A 52A107631 15

FOR ADDITIONAL INFO REFER TO:	DETAIL	CHECKED	ENGRG	WF6	QUALITY	ISSUED	M.D. PAPER	DATE
APPLIED PRACTICES DIMENSIONS ARE IN INCHES								
MATERIAL	SOLID MODEL: 52A107631							

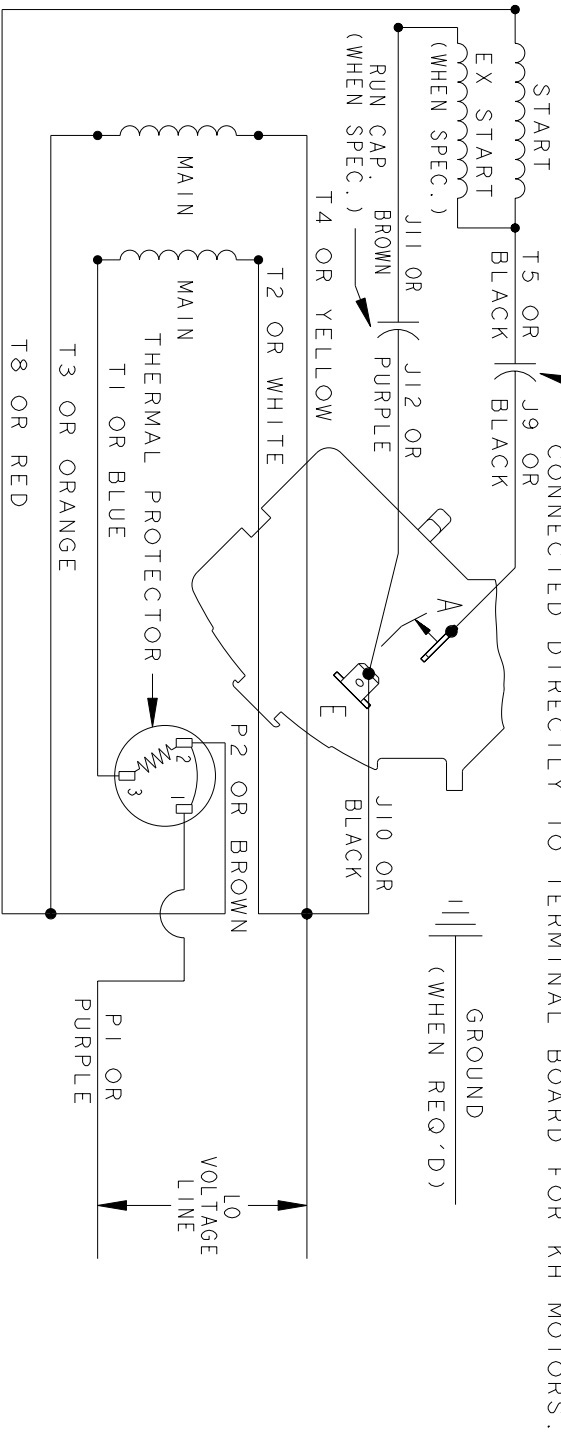
SCALE: 0.250 REF. No.: SHEET 1 OF 1



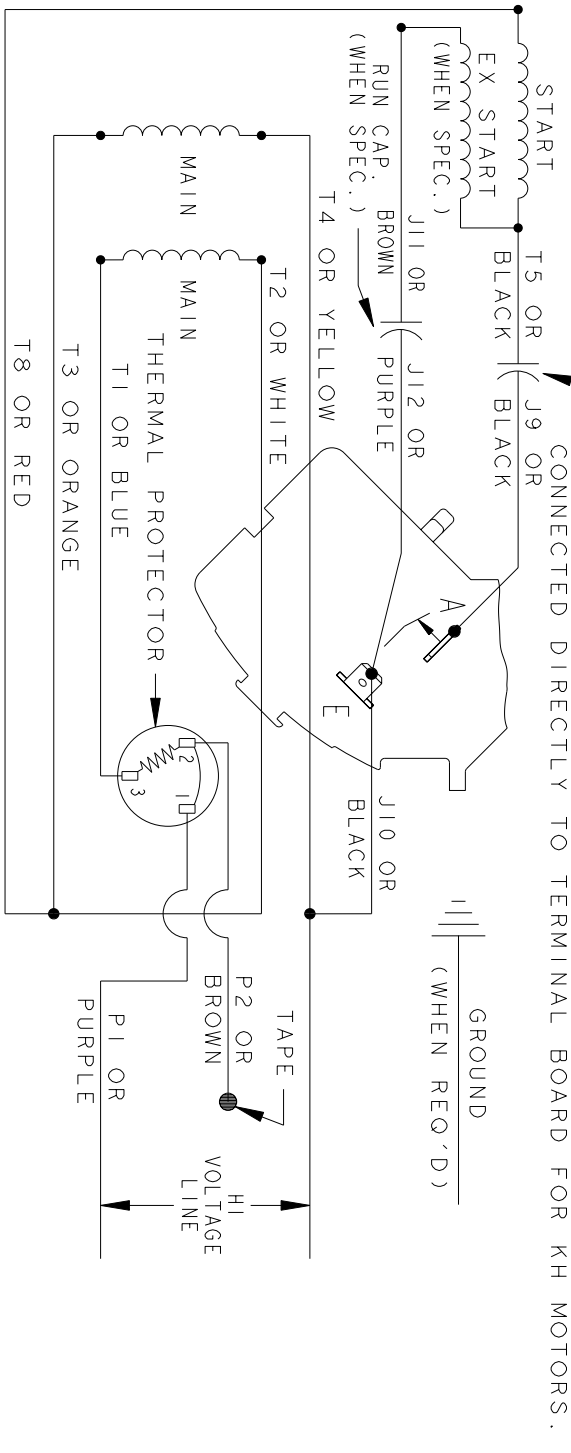
REV.	DESCRIPTION	DATE	APPROVED
7	UPDATED FORMAT	01/05/06	MAM

CCW/CW ROTATION - DUAL VOLTAGE
TYPE KC, KH OR KCR - WITH THERMAL PROTECTOR

CAPACITOR AS SHOWN FOR KC MOTORS ONLY. LEAD T5 BLACK CONNECTED DIRECTLY TO TERMINAL BOARD FOR KH MOTORS.



CAPACITOR AS SHOWN FOR KC MOTORS ONLY. LEAD T5 BLACK CONNECTED DIRECTLY TO TERMINAL BOARD FOR KH MOTORS.



NOTE#1 - TO REVERSE ROTATION, INTERCHANGE T8 RED AND J10 BLACK LEADS.
NOTE#2 - WHEN MORE THAN ONE CAPACITOR IS USED, CONNECT IN PARALLEL.
NOTE#3 - 115D958ABP5 - HIGH CURRENT CONTACTS.

SWITCH (C) - 115D958ABP5, SWITCH (H) - 115D958AA (USE 115D958DA FOR EP)

REF. DIAG. - 113A327, 119A9352 & 52A102102 CONNECTION LABEL - 52X332912

SIGNATURES		DATE	TITLE	
MODEL	M.D.P.	06/29/87	<p>REGAL-BELOIT CORPORATION</p> <p>CONNECTION DIAGRAM</p>	
DETAIL				
CHECKED				
ENGRG				
FOR ADDITIONAL INFO REFER TO:			<p>FME: 30 FRAME SWITCH REDESIGN</p>	
APPLIED PRACTICES	QUALITY		SIZE DRAWING	REV
DIMENSIONS ARE IN INCHES	ISSUED	M.D.P.	A	7
MATERIAL	SOLID MODEL: 52A105383BA	12/11/97	SCALE: 1.000	REF. No.:
			SHEET 1 of 1	